



The Dora Cottage

\$990,000

2,475 A/C sq ft | 4 bedrooms | 3.5 baths

672 JAMES MOORE DRIVE • MOUNT DORA, FLORIDA



LUXURY HOME FEATURES INCLUDE:

- ▶ Easy walking distance to Mount Dora's village center
- ▶ Timeliness exterior architecture with modern interior
- ▶ Ten foot ceilings
- ▶ Three car garage & room for a pool
- ▶ Panoramic lake view from private community park



EXCLUSIVELY OFFERED BY

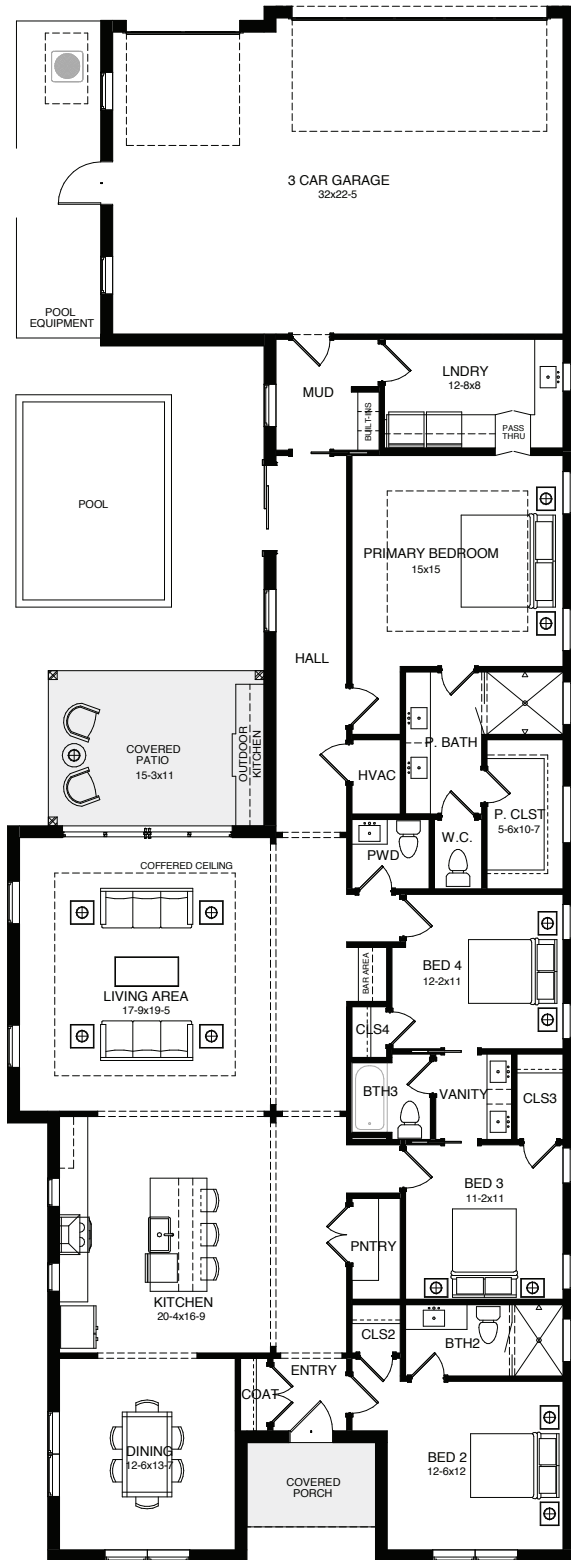


352.720.3360

Licensed Building Contractor CBC1261546



The Dora Cottage



2,475 A/C sq ft

ADDITIONAL FEATURES:

- ▶ Summer Kitchen
- ▶ Open-concept floor plan
- ▶ Spacious kitchen with large center island including a waterfall edge
- ▶ Custom Cabinets with Quartz Counters
- ▶ Designer lighting throughout
- ▶ Wide plank white oak engineered flooring
- ▶ Windsor Window Package with oversized window sizes
- ▶ 8' Interior Doors
- ▶ Thermador Appliance Package - Gas Stove
- ▶ Large laundry with ample storage and clever access from Primary Bedroom
- ▶ Upgraded Premium Shingles from Atlas Roofing
- ▶ Energy efficient HVAC system
- ▶ Gas tankless water heater by Navien
- ▶ Large walk-in closet with natural light
- ▶ Optional Pool with covered patio
- ▶ Lush landscaping package

